

Resort Shower Cabin

with separate Ladies and Gents entrance,
laundry on each side and side entrance porch

Roof pitch approx. 5:12

Size: 20' x 27' plus 4' side entrance porch (custom sizes available)

Description

Log frame: Consisting of milled 3"x 6" tongue & groove (T&G) exterior and interior log walls with saddle notch connections and special log screws to secure logs. Includes: ridge beam, timber beams, posts (c/w post bases) for side porch entrance and 2x4 framed bathroom separation walls.

Roof system (recreational use): Consisting of 2"x 12" precut rafters, fascia boards, trim, sheet metal roofing, R-22 fiberglass insulation, 3/8" plywood as inside sealing, vapor barrier, tarpaper and miscellaneous screws and nails.

Other R-values are available upon request.

Doors and windows (recreational use): Three steel insulated man doors for the entrances, ten pine doors for the interior and four vinyl sliding windows with mosquito screen. Doors and windows come with outside and inside trim and miscellaneous screws and nails.

Wood floor: We can provide the layout plan and specifications for the wood floor.

Foundation: Concrete pillars/pads, cast in place concrete footings or metal screws must be installed by the customer according to our plans.

Engineered plans are available for an extra fee.

Price 2020* (+5% GST)

Prices do not include delivery or setup

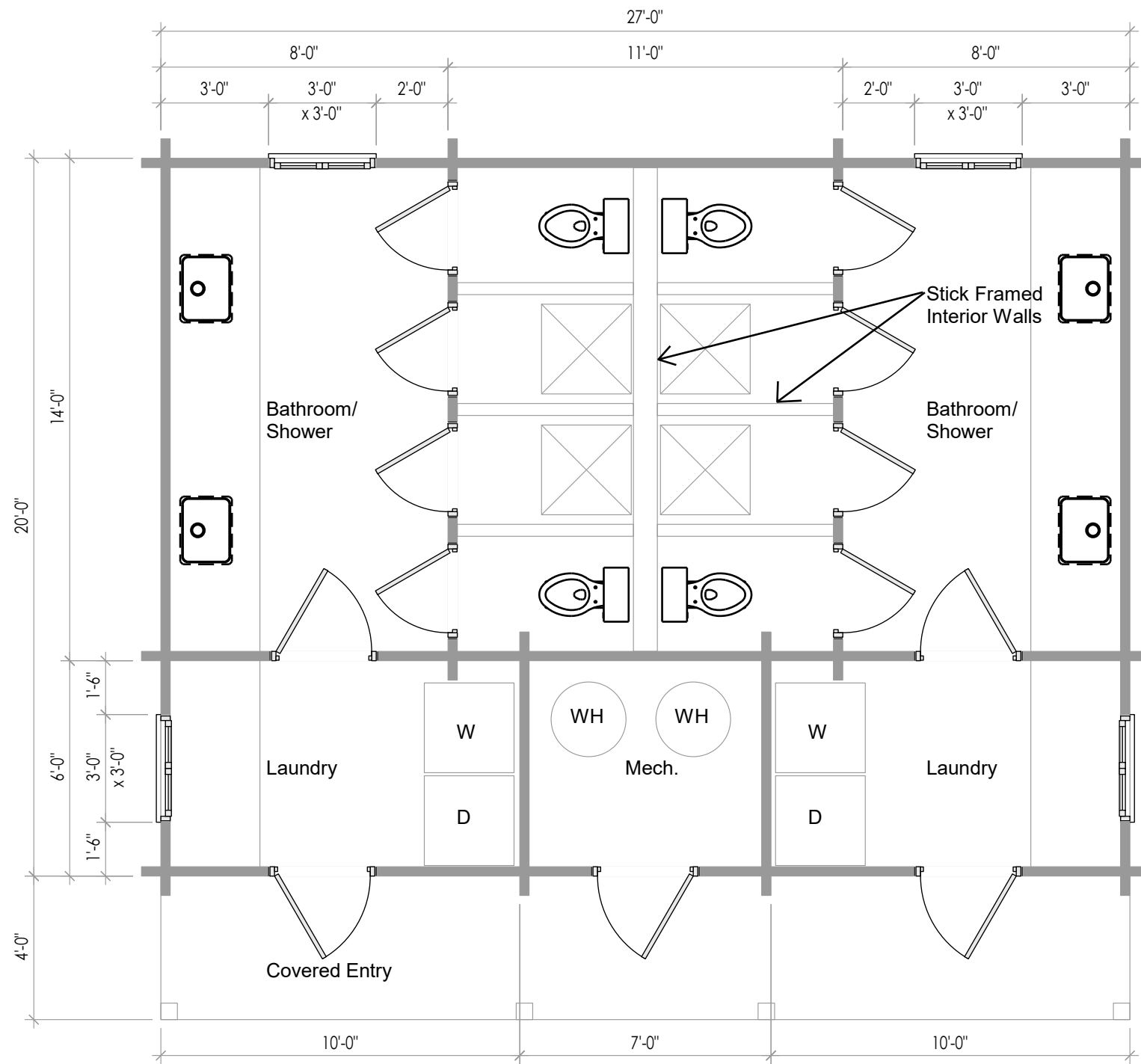
20' x 27'

Log frame: \$ CDN 48,450.00

Roof system: \$ CDN 8,950.00

13 doors, 4 windows: \$ CDN 11,575.00

*Prices are subject to change without notice.

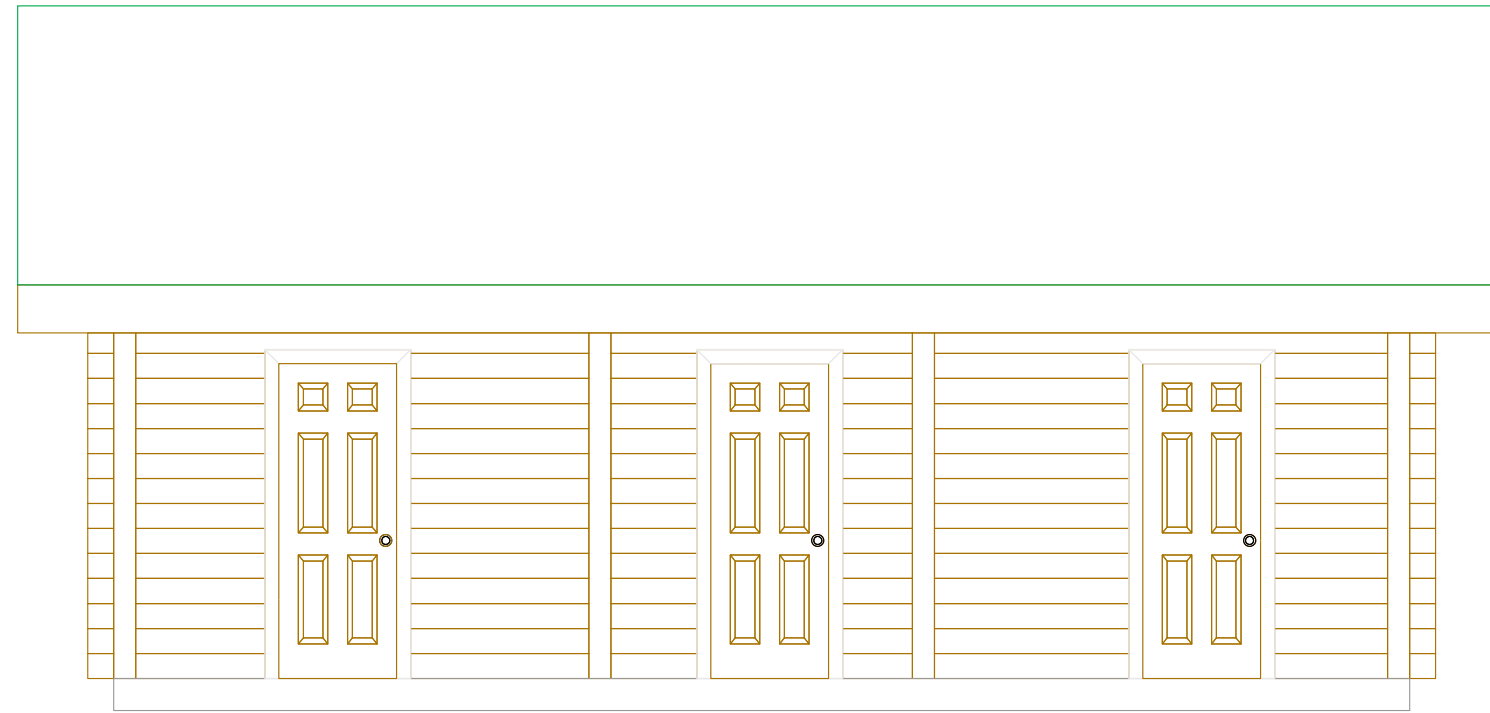


Bath House Floor Plan
540 Sq Ft

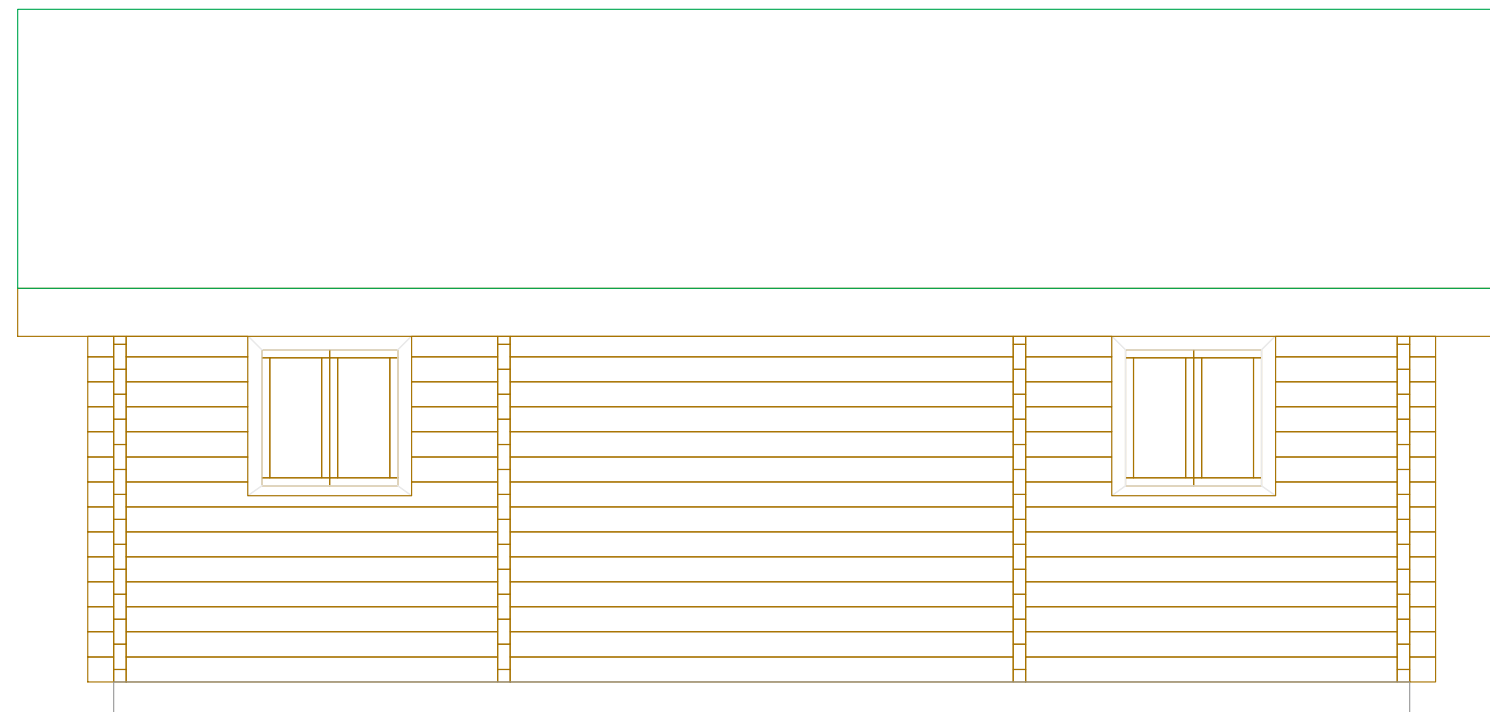
BC LOG CABINS

PO Box 1342, Prince George
British Columbia Canada V2L 4V4
Phone: 250-971-2274
Email: bclogcabins@xplornet.ca

The Resort Shower House



Front Elevation

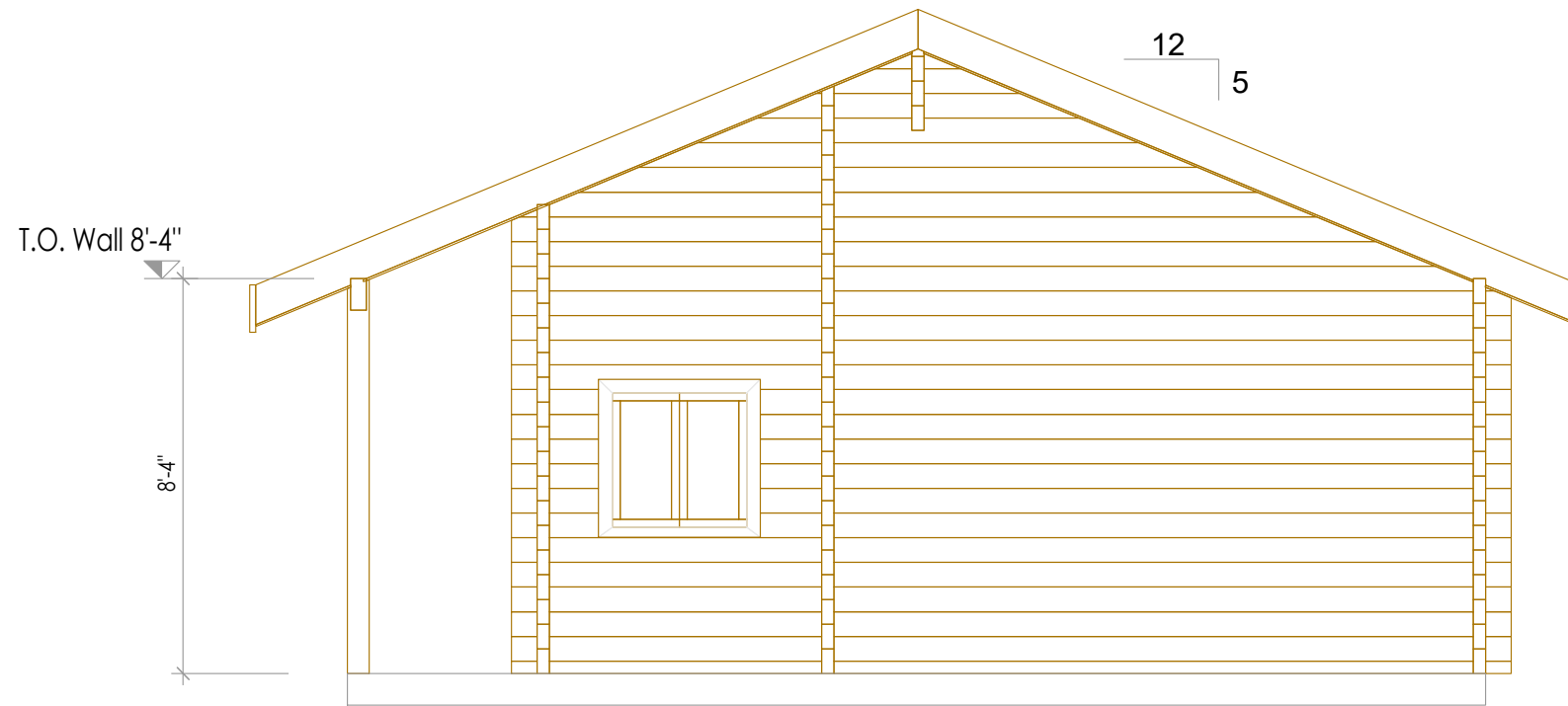


Rear Elevation

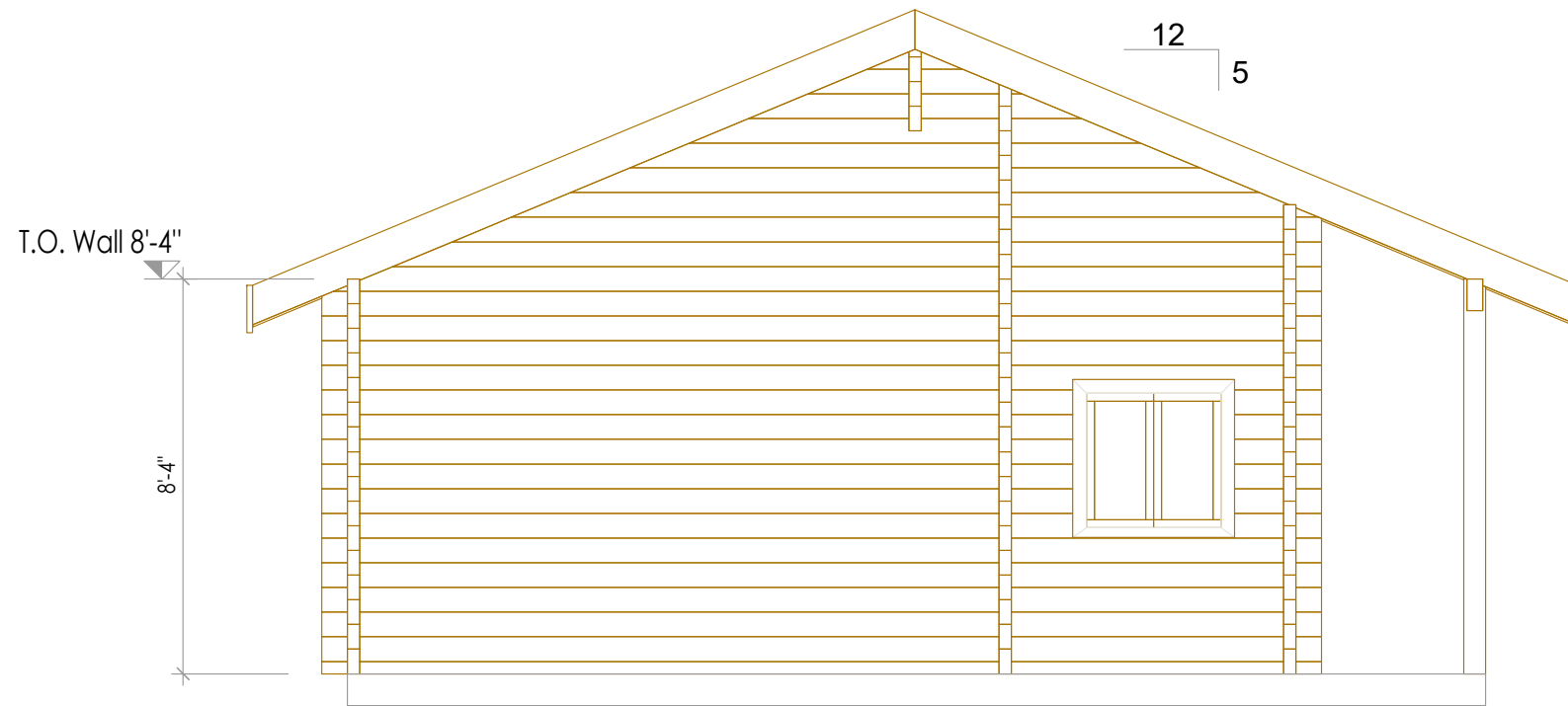
BC LOG CABINS

PO Box 1342, Prince George
British Columbia Canada V2L 4V4
Phone: 250-971-2274
Email: bcclogcabins@xplornet.ca

The Resort Shower House



Right Side Elevation



Left Side Elevation

BC LOG CABINS

PO Box 1342, Prince George
 British Columbia Canada V2L 4V4
 Phone: 250-971-2274
 Email: bclogcabins@xplornet.ca

The Resort Shower House



BC LOG CABINS

PO Box 1342, Prince George
British Columbia Canada V2L 4V4
Phone: 250-971-2274
Email: bcclogcabins@xplornet.ca

The Resort Shower House



BC LOG CABINS

PO Box 1342, Prince George
British Columbia Canada V2L 4V4
Phone: 250-971-2274
Email: bcclogcabins@xplornet.ca

The Resort Shower House